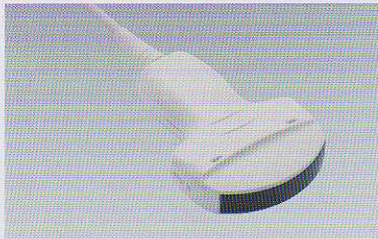


Optional Probes

High Density series for ProSound 2 & ProSound 4

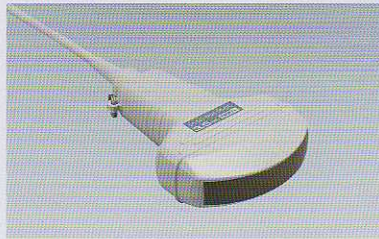
ALOKA
illuminate the change

Electronic Convex Sector Probes



UST-9137
General abdomen,
OB/GYN (ExPHD)

2-6 MHz
62 deg./50 mm



UST-934N-3.5
General abdomen,
OB/GYN

3-6 MHz
62 deg./60 mm

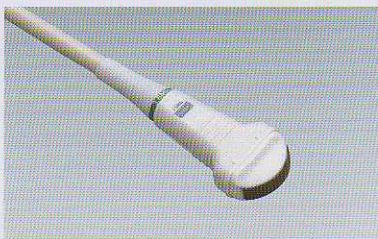


Puncture adapter
MP-2406B



UST-935N-5
Pediatric abdomen,
OB/GYN

3.75-7.5
51 deg./60 mm



UST-944B-3.5
Intercostal approach,
Abdomen/Heart

3-6 MHz
96 deg./20 mm



Puncture adapter
MP-2414C



UST-9111-5
Small part,
neonatal head

3.75-7.5 MHz
96 deg./14 mm

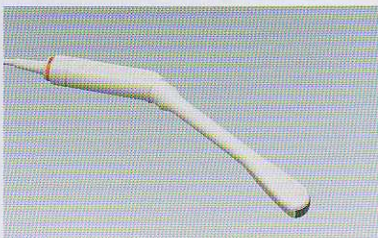


UST-974-5
Small part,
neonatal head

3.75-7.5 MHz
55 deg./20 mm



Puncture adapter
MP-2467

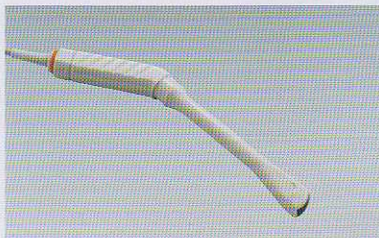


UST-981-5
Endo-cavity,
transvaginal

3.75-7.5 MHz
96 deg./14 mm



Puncture adapter
MP-2445-SET



UST-945B-5
Endo-cavity,
transvaginal

3.75-7.5 MHz
55 deg./20 mm



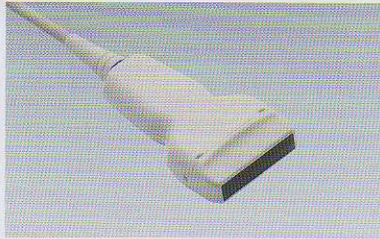
Puncture adapter
MP-2445-SET

Explanatory notes:

UST-9114-3.5	Model number
Abdomen,OB/GYN	Suggested application
2-6 MHz	Probe frequency range
60 deg./60 mmR	Scanning angle (degrees)/ radius of curvature (mmR), or scanning width (mm)

NOTE: Scanning angle, width and selectable frequencies vary depending on the system, operation mode and other conditions.

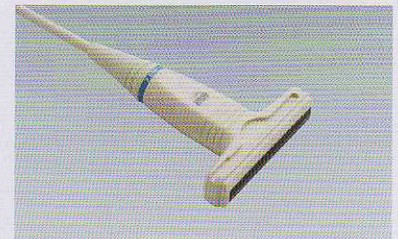
Electronic Linear Probes



UST-5551
Peripheral Vessels (ExPHD)
 4-13 MHz
 40 mm



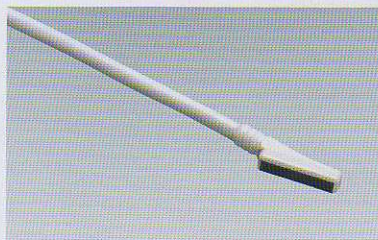
UST-5512U-7.5
Small part, Peripheral Vessels
 5-10 MHz
 43 mm
 Puncture adapter
 MP-2470



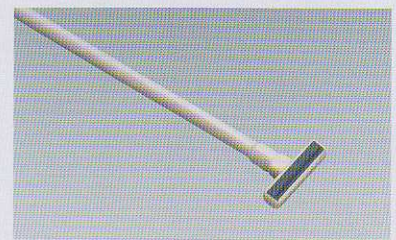
UST-5711-7.5
Small part (Breast, thyroid gland)
 5-10 MHz
 57 mm
 Stand-off (water path)
 Puncture adapter
 MP-2463
 MP-2456



UST-586-5
Pediatric abdomen
 3.75-7.5 MHz
 72 mm
 Echo coupler
 ECM-1



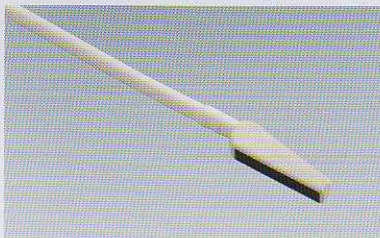
UST-556I-7.5
Intraoperative
 5-10 MHz
 43 mm



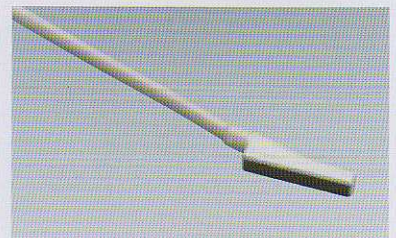
UST-556T-7.5
Intraoperative
 5-10 MHz
 43 mm
 Puncture adapter
 MP-2387



UST-556TU-7.5
Intraoperative
 5-10 MHz
 43 mm
 Puncture adapter
 Echo coupler
 MP-2392
 ECM-3



UST-5820-5
Intraoperative
 3.75-7.5 MHz
 72 mm



UST-587I-5
Intraoperative
 3.75-7.5 MHz
 72 mm



UST-660-7.5
Endo-cavity, transrectal
 5-10 MHz
 43 mm
 Puncture adapter
 MP-2366

ALOKA S.p.A.

20090 Assago Milano - Via Edison, 6
Tel. 02 45.70.61.22 (r.a.) - Fax 02 45.70.61.24
e-mail: aloka@aloka.it
04100 Latina - Via Coletta, 18 int. 1
Tel. 0773 61.14.08 (r.a.) - Fax 0773 61.08.25
e-mail: aloka.latina@aloka.it

- The specifications are subject to change without notice.
- The probes are multifrequency in design. Selectable frequencies depend on the ultrasound system and the display mode.
- The standard components and optional items depend on the country.
- Connectable probe depends on the ultrasound system.
- Please contact your local ALOKA distributor for the latest information.



We strive to provide quality products and services for our customers.
We operate with regard for the environment.

ALOKA CO.,LTD.

6-22-1, Mure, Mitaka-shi, Tokyo, 181-8622 Japan
Telephone : +81 422 45 6049 Facsimile : +81 422 45 4058
www.aloka.com