

# Optional Probes

HST & Super High Density series

# HST (Hemispheric Sound Technology) and HST+ probes

## Convex Sector Probes



HST+



**UST-9130**  
Abdomen,OB/GYN  
Harmonic Echo  
Imaging

2-6 MHz  
60 deg./60 mmR



Puncture adapter  
MP-2473



HST+



**UST-9135P**  
Abdominal biopsy  
Harmonic Echo Imaging

1-6 MHz  
60 deg./60 mmR

Includes puncture  
adapter as standard



**UST-9126**  
Abdomen,OB/GYN  
Harmonic Echo Imaging

2-6 MHz  
60 deg./60 mmR



Puncture adapter  
MP-2473

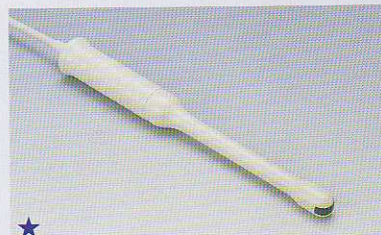


**UST-9115-5**  
Abdomen,OB/GYN

3-8 MHz  
60 deg./60 mmR



Puncture adapter  
MP-2473



**UST-9118**  
Endo-cavitary

3-9 MHz  
180 deg./9 mmR



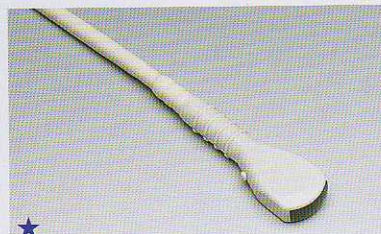
Puncture adapter  
MP-2748



**UST-675P**  
Endo-cavitary

3-9 MHz  
180 deg./9 mmR

Includes puncture  
adapter MP-2452  
as standard.



**UST-9120**  
Intraoperative  
Small part

4-10 MHz  
70 deg./20 mmR

\*Some ultrasound systems are  
not compatible with MP-2783.



Puncture adapter  
MP-2458



Puncture adapter  
for central venous  
catheterization  
MP-2783\*



**UST-9133**  
Intraoperative, Biopsy  
Harmonic Echo  
Imaging

2-6 MHz  
82 deg./20 mmR



Puncture adapter  
MP-2781



**UST-9132I**  
Intraoperative

4-10 MHz  
65 deg./20 mmR



**UST-9132T**  
Intraoperative

4-10 MHz  
65 deg./20 mmR



**UST-9146I**  
Intraoperative,  
Harmonic Echo

2-6 MHz  
82 deg./20 mmR



Waterproof connector  
cover: MP-2790



**UST-9146T**  
Intraoperative,  
Harmonic Echo

2-6 MHz  
82 deg./20 mmR



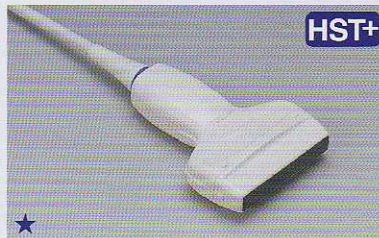
Waterproof connector  
cover: MP-2790

NOTE: Scanning angle, width and selectable frequencies vary depending on the system, operation mode and other conditions.

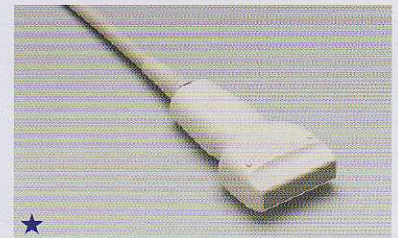
# Linear Probes



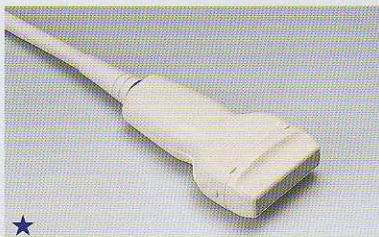
**UST-5411**  
**Compound Array Probe**  
 Peripheral vessels,  
 small part  
 Harmonic Echo Imaging  
 4-13 MHz  
 38 mm



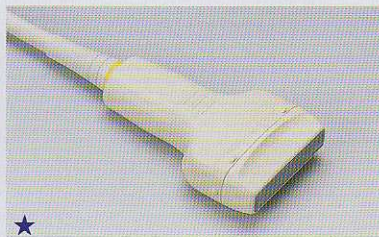
**UST-567**  
**Small part  
 Harmonic Echo Imaging**  
 3-13 MHz  
 50 mm



**UST-5412**  
**Peripheral vessels,  
 small part  
 Harmonic Echo Imaging**  
 4-13 MHz  
 38 mm



**UST-5410/UST-5410H**  
**Peripheral vessels,  
 small part  
 Harmonic Echo Imaging**  
 4-13 MHz  
 37 mm

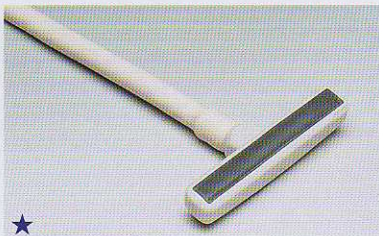


**UST-5543**  
**Superficial tissue**  
 4-13 MHz  
 35 mm



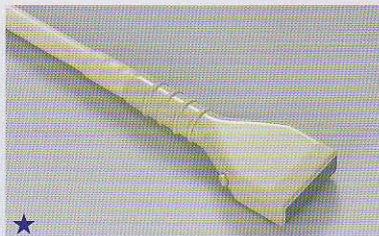
**UST-5712**  
**Small part**  
 3-10 MHz  
 60 mm

Water Path  
 Puncture adapter  
 MP-2463  
 MP-2456

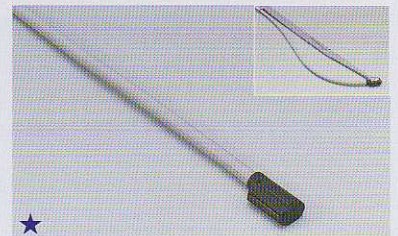


**UST-5713T**  
**Intra-operative**  
 3-10 MHz  
 60 mm

Puncture adapter  
 MP-2448



**UST-547**  
**Intra-operative**  
 4-13 MHz  
 25 mm



**UST-533**  
**Microsurgery**  
 4-13 MHz  
 10 mm

T-type handling tool:  
 MP-2749  
 I-type handling tool:  
 MP-2750



**UST-5550**  
**Laparoscopic surgery  
 Flexible type**  
 4-10 MHz  
 38 mm  
 Insertion tube: 10mm dia.



**UST-678**  
**Bi-plane transrectal**  
 ● Convex sector: 3-9 MHz, 120 deg./9 mm  
 ● Linear: 4-10 MHz, 60 mm

Puncture adapter:  
 MP-2451

## Bi-plane Probe

**Explanatory notes:**  
**UST-9114-3.5** — Model number  
**Abdomen,OB/GYN** — Suggested application  
 2-6 MHz — Probe frequency range  
 60 deg./60 mmR — Scanning angle (degrees)/ radius of curvature (mmR), or scanning width (mm)

★ : Sterrad compatible



